



**ANNUAL REPORT 2020**



# TABLE OF CONTENTS

Mission .....	3
Who We Are.....	5
Executive Director's Note.....	7
Diversity Equity, Inclusion & Anti-Racism.....	9
Studio & Campus.....	12
Artists in Residence.....	15
Teaching & Learning the Industrial Arts.....	17
Youth Camps.....	21
Workforce Training.....	21
Public Projects.....	19
Community Events & Partnerships.....	23
Tenants at 27 Sims Ave.....	25
Budget Report.....	26
Board and Staff Demographics.....	28
Supporter Recognition.....	29
In-kind Supporter Recognition .....	35
Memoriam .....	37



# MISSION

The Steel Yard's historic campus is a platform for professional artists, makers and the community to practice and learn the industrial arts. The organization fosters creative and economic opportunities by providing workspace, tools, training, and education, while forging lasting links to a local tradition of craftsmanship.



Photo Credit: Mike Salerno

# WHO WE ARE

The Steel Yard is a non-profit industrial arts organization in Providence, RI. Our professional workspace enables community access to welding, blacksmithing, jewelry, ceramics and the foundry arts. We believe in a world made by hand, where individuals, neighbors, businesses, institutions, municipalities and communities come together to enrich our private lives and public spaces through creative work.

## BOARD OF DIRECTORS

Jennifer Carnevale | *Board Chair*

Frank Previti | *Treasurer*

Rupa Data

Damian Ewens

Karen Harris

Taylor Jackson

Delia Rodriguez-Masjoan

Colin Murphy

Danika Notar

Nicole Rustin

## STAFF

Howie Sneider | *Executive Director*

Islay Taylor | *Associate Director*

Sally Turner | *Development Director*

Chris Dalpe | *Communication & Events Manager*

David Allyn | *Event Coordinator*

Adam Chuong | *Course Coordinator*

\*Ben Filchak | *Studio Director*

\*Michelle Raccone | *Studio Coordinator*

Tim Ferland | *Public Projects Director*

Jenny Sparks | *Public Projects Associate Director*

\*John Nguyen | *Workforce Projects Manager*

Layla Farahbakhsh | *Apprentice*

Jake Lahousse | *Apprentice*

Ash Littlejohn | *Apprentice*

Marco Lopez | *Apprentice*

Kendra Plumley | *Apprentice*

*\*Special thanks to our frontline studio staff who worked daily to ensure safe and ongoing studio access.*





Photo Credit: Adam Chuong

## EXECUTIVE DIRECTOR'S NOTE

We made it through 2020 and I know you will join me in marveling at what we have achieved together.

To have simply survived the greatest disruption any of us can remember, would have been enough. However, we adapted and endured, and were able to support artists, create job-training opportunities and continue fulfilling our mission.

It took every tool we had to keep The Yard going. We hosted a digital Iron Pour, wore masks in the studio, held educational programs when we safely could, and created digital interviews and tours with our resident artists. We continued producing public-art and kept our staff and contractors going to ensure the future of craft.

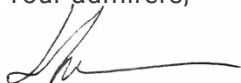
While the losses have been staggering, this report is evidence that a connected community is a powerful force for survival. We will hold close our lessons learned and look forward to more creative justice, industrial art love, green solutions and proud interdependence.

Thank you for all you have done for each other. Thank you for giving us the strength to adapt, sparkle and burn bright. Your support has been the lifeline that filled the tenuous gap between funding sources, and has inspired us to enter 2021 in a position of strength and resilience.

With your continued support, we know that we can look forward to a brave future.

Thank you,

Your admirers,

A handwritten signature in black ink, appearing to read 'Howie', with a long horizontal flourish extending to the right.

Howie Sneider and the Staff and Board of The Steel Yard.





# D.E.I. & ANTI-RACISM

The Steel Yard firstly, would like to acknowledge the occupied Indigenous land on which The Yard sits. This land is the traditional homelands of the Narragansett and Wampanoag peoples. We acknowledge the colonial oppression and genocide utilized in an effort to forcibly remove Indigenous peoples from this territory. We aim to continuously identify how we may be upholding colonial mindsets and/or ideals. We respect all diverse Indigenous Nations and honor the connection that Indigenous peoples share with the land on which we operate.

Continual learning and action are needed to make our campus and programs safe, inclusive, accessible, equitable, and just. We commit to reimagine, rebuild, and develop programs and systems to counteract the harm caused by structural racism and oppression of all forms. To embrace this ongoing mission, we have created a standing committee of Board and Staff members to explore opportunities for justice in all of our programs and promote equitable practices and learning across the organization. We invite feedback and participation.

At the Steel Yard, we believe everyone deserves access to the education, skills, and equipment needed to directly improve their conditions and community regardless of their race, color, religion, national origin, marital status, political affiliation, sexual orientation or gender identity, status with regard to public assistance, disability, sex, age or previous experience.

## ACCESSIBILITY

We are an accessible industrial-arts center, and this past year we partnered with Arts Equity and R.A.M.P. (Real Access Motivates Progress) to assess our studio for accessibility, make recommendations for improvements and develop an [Accessibility Guide](#) and [Disabilities Welcome Guide](#). Studio upgrades, equipment and the guides themselves were funded by the RI State Council on the Arts & The Champlin Foundation. Special thanks to Jeannine L. Chartier, Tina G. Pedersen and Tim Cox for your input and leadership.





# STUDIO & CAMPUS

"Access to tools that I could never afford otherwise makes me stronger"  
*-Anonymous, 2020*

With so many of our programs and events on pause in 2020, we took every opportunity to improve our shop and campus. We decorated and installed shade structures over our 'hill' and picnic shack, painted our studio bathrooms, soundproofed the Blacksmith studio, installed user friendly overhead doors on the student and events trailers, lighted the containers in our 'back 40,' and installed a 51 kilowatt solar array to generate electricity for our studio!

We installed ADA amenities, many of which Public Projects produced, including picnic tables, a new sink in ceramics, a jewelry bench, an ADA ceramics wheel and plasma cutting table. We hired local artists to design and produce wayfinding signage in the studio, re-poured and repaired our street-side sidewalk and **welcomed our friends Public LLC into the neighborhood as the newest tenant at 27 Sims Avenue!**

While we weren't able to host many volunteers due to COVID-19, we were able to create a new and different Iron Pour. With the help of masked and socially-distanced volunteers we created our larger-than-life sculptures and poured hundreds of pounds of molten iron onto them. We shared our production "Go Big and Stay Home!" for free with a virtual audience through the magic of digital production!

## SUPPORTERS MAKE-THE-DIFFERENCE

More than 400 supporters kept The Yard running in 2020!



Photo Credit: Mike Salerno



# ARTISTS IN RESIDENCE

"I feel like my practice is reinvigorated after this residency and that it has set me on an exciting new direction, I am exceedingly grateful."

*-Ali Vaughn, Micro Resident, 2020*

The Steel Yard's Residency Program is designed to assist emerging to mid-level artists in growing and strengthening their art practice in a supportive, cooperative environment through access to The Steel Yard's studios and facilities. Participating artists have the opportunity to work together, to take part in community events and sales and to be creative leaders in a vibrant community shop. Most of all, residents get an all access pass to our studios in pursuit of their own work.

In 2020, thirteen artist residents worked safely in our 12,000 square foot industrial arts studio. While some artists had to have their residency rescheduled due to the COVID-19 pandemic - all were able to honor their commitments. They poured iron, fired atmospheric kilns, taught classes and kept the shop alive during eerily quiet times.

We helped nurture their creative and economic well-being by hosting virtual professional development workshops (for free!), and organizing an outdoor Holiday Art Market.

## 2020 RESIDENTS IN METALS, CERAMICS AND JEWELRY

EMILY BAKER (METALS)  
TOPHER GENT (CERAMICS)  
SCOTT KEELEY (METALS)  
DANIKA NOTAR (FELLOW | CERAMICS)  
AJA BLANC (CERAMICS)  
TOM HUBBARD (FELLOW | CERAMICS)

BRIANNA LARSON (FELLOW | CERAMICS)  
HENRY ROBINSON (CERAMICS)  
ERICA COMPTON (METALS)  
DAVID KAROFF (METALS)  
BENJAMIN LEVINE (METALS)  
ELLEN ROGERS (METALS)

## SUPPORTERS MAKE-THE-DIFFERENCE

2020 support allowed us to waive many artist residency fees and established the digital professional development series for virtual learning!



Photo Credit: Adam Chuong

# TEACHING & LEARNING THE INDUSTRIAL ARTS

"You reminded me that I still need to strive to be an empowered badass!  
It's something I used to teach my students and it was a great reminder  
for me!!"

*-Bobbi Jarvis, Open Enrollment Student, 2020*

The Steel Yard offers unique courses in the industrial arts for learners of all skill levels. Students receive hands-on experience working with the tools of the trade in a safe and creative environment, and walk away with something they made by hand.

Regardless of past experience - there is something for everyone. Every course is instructed by working artists and tradespeople who are deeply invested in their craft. Courses are affordable and small, with readily available and standing scholarships, and an average of five to eight students per course.

Due to the COVID-19 pandemic, Open Enrollment Courses operated at a limited capacity in 2020. We cancelled courses starting in March 2020 and re-opened in August with social distancing and additional safety protocols. In just this limited season, we had 160 students, 113 of those being new to The Yard. We hired 12 returning artist instructors & teaching assistants, and were able to onboard 3 new instructors.

## STUDENT DEMOGRAPHICS

### RACE/ ETHNICITY

White 84%

Other 6%

Asian 5%

Black / African American 4%

American Indian/ Alaskan Native 1%

Hispanic/Latinx 7%

### GENDER IDENTITY

Female 49%

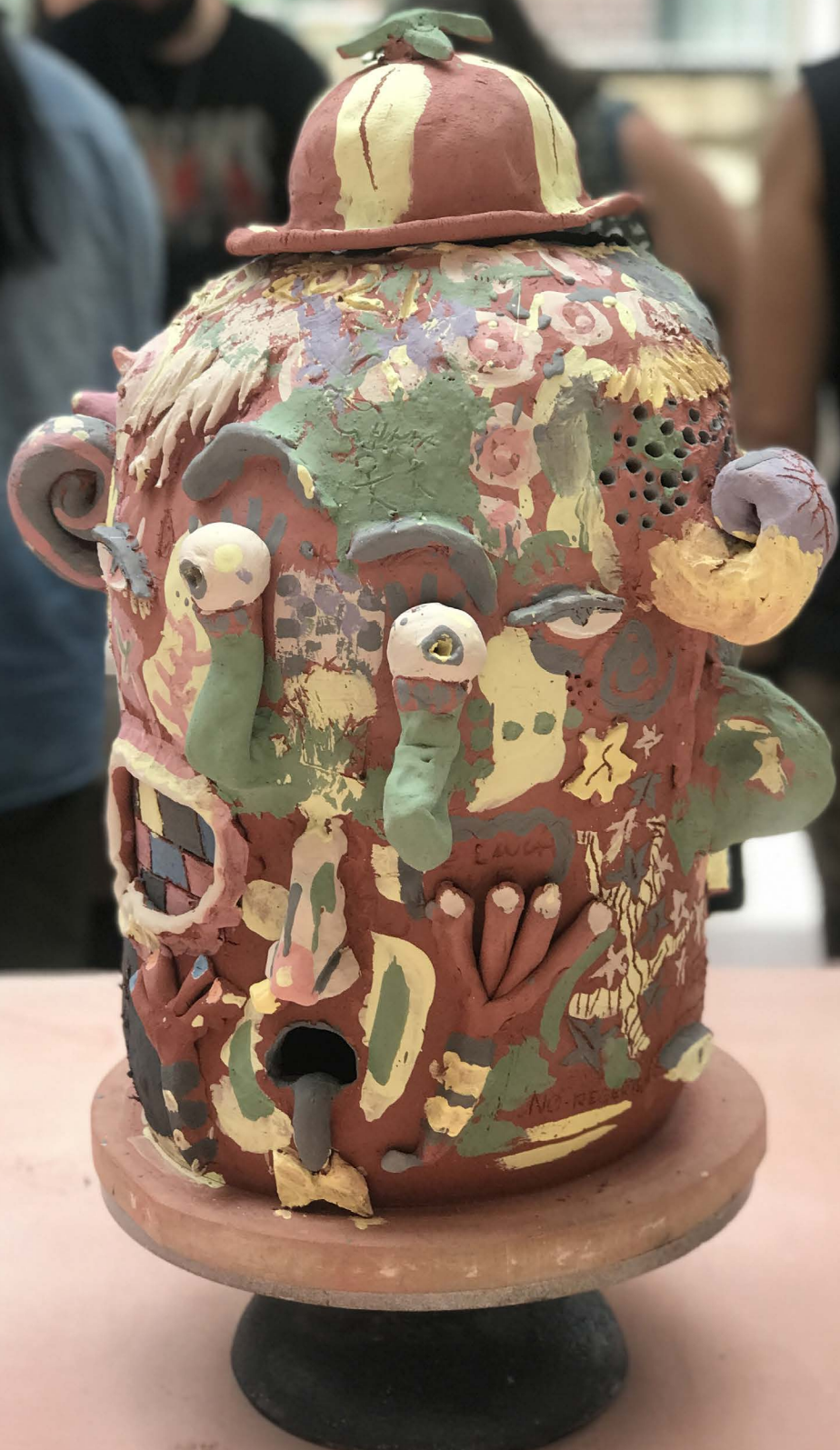
Male 46%

Non-Binary/ Other 6%

## SUPPORTERS MAKE-THE-DIFFERENCE

Generous individual support established our FIRST Queer, Trans, Black, Indigenous, and People of Color (QT/BIPOC) open enrollment course scholarship program!





# YOUTH CAMPS

“It was most definitely a transformative two weeks for my creator self, and honestly the same goes for my queer self. I'm eager to further explore metalwork, and am overwhelmed that I have continued access to all The Steel Yard has to offer.”

*-Youth Camper, 2020*

Youth Summer Camps at The Steel Yard are 2 week-long day programs instructed by professional artists who work in the field! Each camp offers educational workshops & studio time in a real working industrial shop for young folks ages 14 – 18. We maintain a safe and respectful environment to explore creative industrial arts. We're here to encourage creativity as well as offer an unforgettable summer experience for every participant.

2020 brought new opportunities for Young Artists at the Yard. In addition to our annual Metals and Ceramics Camps we partnered with our queer instructors to imagine a new 2-week LGBTQ+ youth opportunity. Thus was born Camp Sparkle! Eight campers, aged 14-18, spent the first week in small-scale metals, learning jewelry and metalsmithing techniques. Having built up their confidence in smaller metals, they scaled up to learn how to weld.

Camp Sparkle fosters free expression of gender and sexuality in an environment of self-discovery and creativity. The camp provides a welcoming, safe environment where young artists can explore and express their identities within the space of making, and has quickly become a Steel Yard tradition.

## SUPPORTERS MAKE-THE-DIFFERENCE

With the support of individuals, corporations and Foundations every young artist attended for free or at reduced cost!





Photo Credit: Jenny Sparks

# WORKFORCE TRAINING

" Different artists have different styles of how they do their art. And there was diversity between the different people working on the project.

It was fun, hard work, and I liked it. "

*-Jake Lahousee, Apprentice, 2020*

The Steel Yard is dedicated to providing Rhode Islanders who have experienced barriers to financial stability with access to education, training and facilities to learn and practice the industrial arts. We offer paid job-readiness programs that provide the technical skills necessary to make participants more employable in livable-wage jobs.

Our apprenticeship is built around the fabrication of community-based public-art, while borrowing from the traditions of guild learning and on-the-job training. Two graduates of each introductory program are hired as apprentices to be Public Projects team members for a minimum of three months.

In 2020, we hosted eight people in our reformatted Welding Training class, and hired three apprentices. All participants learned basic metalworking skills, fabricated public projects that were installed locally and got paid to participate.

## SUPPORTERS MAKE-THE-DIFFERENCE

Our partner support allowed us to reframe our Workforce Program to create Apprenticeships, providing more intensive training and sustainable income for participants.



Photo Credit: Jenny Sparks

# PUBLIC ART & COMMISSIONS

"I've gotten to work with a great mix of designers and Workforce training graduates through these projects. I love the combination of creativity and functionality in Public Projects work."

*-Brendan Rose, Public Project Artist, 2020*

Public Projects designs, fabricates and installs custom artwork for the public realm. We specialize in making functional and artistic street amenities (trashcans, bike racks, benches, fences, etc.). We also create and manage fine art installations.

In a twist of fate, the COVID-19 pandemic brought a lot of work into our shop. In November and December 2020, we hired 12 artists to craft 34 PVD Nos Cuida Afuera: Take-It-Outside kits, that helped Providence businesses stay in operation, and partnered with local creatives to produce COVID safety signage. More than 80% of the funding for this work was spent locally and 25% of it went directly to the art!

We also continued to create artistic amenity projects for our partners throughout the State and designed, built and installed a line of ADA accessible furnishings for our own shop and campus.

Renewed interest in outdoor gathering and public space is providing many new opportunities for local artists. We are glad we could be safe and productive.

## SUPPORTERS MAKE-THE-DIFFERENCE

Teaming up with the City of Providence, the State and other partners we kept artists employed throughout the year!





Photo credit: Bilindoff



# PARTNERSHIPS & COMMUNITY EVENTS

"The Steel Yard allowed us to experience the music and culture we love in new places. They gave us space to do us, be ourselves and that's something we definitely don't take for granted."

*-Jay & Sabrina, stay silent PVD, 2020*

Events at The Steel Yard are intentional about community building, providing opportunities to gather, curate experiences and create collective memories in an accessible, but rare, urban green space.

Cultural partnerships and community events were limited last year, but we still found ways to experiment and celebrate each other. We opened our campus to artists and community partners at no cost for collaborative events. These open-air outdoor partnership projects included; One Neighborhood Builders & The Elisha Project hosting a food, census and voter registration drive; a school backpack give away with the TryCaps 4-H group; the Wilbury Theatre Group and Troop PVD presenting a live musical; and hundreds gathered for the Fair-Trade Black Business Owners pop-up market, Hosted by Trade Pop-up.

Our year culminated in the creation of our first ever Winter Art Market featuring local crafts people. According to Americans For the Arts, 63% of artists/creatives experienced unemployment due to shut-downs and COVID restrictions. The market, supported by a HArT Grant, brought crowds to the Yard in the cold of December for a one-of-a-kind, masked, and socially distanced art sale and exhibition.

## SUPPORTERS MAKE-THE-DIFFERENCE

Thanks to our partners and community members we maintained the continuum and hosted our 15th Annual Iron Pour (albeit virtually)!



CAPS YOUTH CLUB  
PROCE



TRY CAPS  
Youth Program  
Try Creative Art

RHODE ISLAND  
4-H

TRY CAPS Creative Art and 4-H  
Program  
After School, Summer and Weekends  
Meeting in Classroom  
37 Little Avenue  
St. Paul  
Providence, RI 02909  
Program Director  
Catherine E. Thompson  
(401) 845-8813  
ThompsonC@providence.org  
Web site: [rhodeisland.4-h.org](http://rhodeisland.4-h.org)  
4-H Club information can be found at:  
4-H.org  
To request a Try CAPS Creative Art and 4-H  
kit, visit [rhodeisland.4-h.org](http://rhodeisland.4-h.org)  
4-H.org



# TENANTS AT 27 SIMS AVE

The Steel Yard rents space in our office building at 27 Sims Ave., to small creative businesses supporting their growth, networks and opportunities! They pay below-market rate rents for the neighborhood and give back heartily to the cultural vitality of our community. In 2020 we welcomed a new neighbor and supported two others as the pandemic affected how we all do business. We shared hallways and stories and have made it through together.

Thank you to our Incredible Tenants:

**West Side Sewing Studio** - a fully outfitted space devoted to sewing instruction. All classes are individualized instruction; each person works at their own level and speed, making whatever they choose. Classes, which run year-round, are kept very small ( 2-5 people) so each person gets the attention and assistance they need.

*Tenant since 2012*

**Try Caps (4H Creative Art and Problem Solving Program)** - Youth ages 10 and older buddy- up with volunteers, parents, and mentors to show their leadership skills in action as they explore the great opportunities at TRY CAPS Creative Art and Problem Solving Program.

*Tenant since 2015*

**Public LLC** - Founded by lifelong Providence residents, Casandra and Spocka, Public LLC is a creative hub for art and music and also a place to host events, meetings, workshops, and classes. It's a space that welcomes all members of the community to experience and interact with various forms of art.

*Tenant since 2020!*

# BUDGET REPORT

"2020 was a year of opportunity and recovery for the Yard. Our first anticipated full-year of access to the renovated studios was put on hold because of COVID-19, but we did our best to keep every program active and on the books. We found a silver lining with investments in outdoor space across the community that provided a steady flow of work for Public Projects and Workforce Training. Targeted gifts allowed us to pay down much of our construction debt from the SuperStudio campaign and supporters showed up in new and generous ways to help us nearly balance the budget under extraordinary circumstances."

*-Frank Previti, Board Treasurer*





## 2020 INCOME

- Corporate Foundation And Business Support - \$409,152
- Individual Donors And Fundraiser Events - \$167,639
- State Grants - \$148,371
- Tuition, Store and Studio Use - \$56,961
- Rents From Site And Office - \$24,232
- Public Projects Commissions - \$265,762

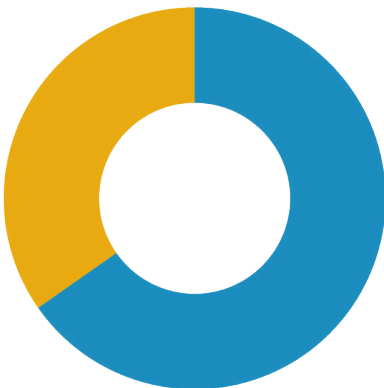
**TOTAL: \$1,072,119**



## 2020 EXPENSES

- Courses / Education \$160,988
- Workforce Training \$81,605
- Public Projects \$174,504
- Admin \$542,352
- Operations And Facility \$24,406

**TOTAL: \$1,197,843**



## CAPITAL CAMPAIGN ACTIVITY

- SuperStudio Gifts and Debt Relief - \$481,462
- SuperStudio Expense (Solar etc.) - \$256,239

# STAFF & BOARD DEMOGRAPHICS

## RACE/ETHNICITY

White 73%

Asian 13%

Black / African American 7%

Black /African American and White 7%

Hispanic/Latinx 7%

## GENDER

Female 47%

Male 42%

Non-binary/Other 11%

# SUPPORTER RECOGNITION

"Your organization is a one-of-a-kind opportunity."  
*-Lana Tereshko, 2020*

To all you Yardies who kept us going with your gifts of time, talent and money and the Foundations who unrestricted their gifts to keep our operations running, you sustained us and kept us STRONG.

The following represents ALL of you who supported us in 2020. Some of you are new - and some have been with us since the start. For the first time we are presenting this list based on the length of our relationship (when you made your first gift). Thanks to all of you for your enduring love of the industrial arts.

Please contact Sally Turner, [sally@thesteelyard.org](mailto:sally@thesteelyard.org) , if there are any omissions in this document. Thank you!

## WELCOME NEW SUPPORTERS - YOU SHOWED UP!

Kishin Anderson  
Emily Baker  
Samuel Barber  
Samantha Barris  
Susan Bastian  
Renee Bessette  
Emma Boast  
Elie BouRamia  
Fireseed Alliance  
William Bowman  
Laura Brion  
Wendy Brusick  
Jeffrey Buccacio  
Jennifer Canole  
Eric Carnevale  
Carter Family Charitable Trust  
Jonathan Chambers  
Wayne Clairborne  
Amy Cohen  
Rachel Colaiace  
Julie Curcuru  
Dawn Dalpe  
Eileen Danaher  
Rupa Datta  
Debbi Dauphinee  
Heather Desantis  
Sue Desillier  
Neal Walsh & Cristina DiChiera  
Brian Dodier  
Mitchell Dondey  
Meredith Drake  
Lisa Esser  
Marlene Ewankow  
Daniel E.Fain  
Anneke Frazer  
Rachel Gaubinger  
Topher Gent  
Robert Gould  
Terrence Gray  
Alfred Green III  
Jarriid Hall  
Lynn Halmi  
Ray Hartenstine

Louise Havens  
Juli Anna Herndon  
Liz Hesser  
Rachael Higham  
Danielle Holland  
Anna Hughes  
Sage Hylton-Lemons-Link  
Jessy Jakulevicius  
Mark Kaplan  
Phillip Karlsson  
Rebecca Kerwick  
Samuel Kornhauser  
Marc Kroon  
Sarah Kundel  
Marie Larouche  
Bri Larson  
Suzanne Larson  
Dennis Laversa  
Christopher Leininger  
Benjamin Levine  
Beth Lockwood  
Donald Lotufo  
Sara Mandel  
David Mann  
Karen Marcantonio  
Emilie Marchetti  
Therese Martin  
Jason Marton  
Patrick Mcmillan  
Angel Medrano  
Gretchen Meinke  
Reed Mercado  
Bettye Baldwin & Charles Mercado  
Ashley Mercado  
Gwen Heath Mitrano  
Ido Mor  
Phoebe Neel  
Elizabeth Nordstrom  
Danika Notar  
Chris Orton  
Liz Pavese  
Sarah Pennisten  
Fernando Pezzino



## WELCOME NEW SUPPORTERS - YOU SHOWED UP!

Gil Poulin  
Joe Principe  
Gretchen Putnam  
Ben Rackliffe  
Rhode Island Commerce  
Kate and Chris Robinson  
Rena Rong  
RobertRyan  
Chris Ryan  
Jaime Salinas  
David Scanlan  
Ashley Schwebel  
Bianca Sciartilli  
Michelle Scully  
Sabrina Solaris-Hand  
Fatima Spartichino  
Julie Steffes  
Irma Tabellione  
Donna Sue Taylor  
Elizabeth Todd  
Charlotte Toolan  
William Tracey  
Katherine Truskoski  
Adam Tucker  
Max Van Pelt  
Alexandra Vaughan  
Nelson Viera  
Lori Viner  
Dara Wais  
Leigh Waldron-Taylor  
Vanessa Ward  
Washington Trust Charitable Foundation  
Jeff Wells  
Lee & Melvin Wesley  
Paul Williamson  
JoshuaWolf  
Su-Hsiu Wu

## SUPPORTING US FOR THE LAST 5 YEARS - AND GOING STRONG!

Lauren Bardsley  
Patti Barnatt  
Bauta Family Foundation  
Janessa Bentley  
Mark Boddie  
Leon Boghossian III  
Megan & Rob Boyaval  
Mary Jane Bressler  
Alison Bruun  
Maureen Buttenheim  
Robert Carlson  
Case Construction Company  
Rafael Cerrada  
The Champlin Foundation  
Dr. Joseph Chazan  
Connie Frank Foundation  
Brian Connolly  
Jim Cournoyer  
Christopher D'Ovidio  
Victoria Dalpe  
Marilyn Davis  
Jane Dillon  
Laura Dodge  
Daniel Doolittle  
Larry Dubroff  
Laura Duclos  
Shauna Duffy  
Fiduciary Charitable Trust  
Ben Filchak  
Carol Freeman & William C. Freeman  
Peter & Lucia Gill Case  
Fredric Gorman  
Sheri Griffin  
Karen Harris  
John Harvey  
Ruth Harvey  
Pamela Hughes  
Alanna Iacobbo  
C. Peter Jencks  
Anne Marie Kane  
Margo Karoff-Hunger  
Sarah Kern  
Dan Levinson  
Steven Lubar

Anne-Marie Lubenau  
James Lynch  
George Marderosian  
Susan Matthews  
Josephine Merck  
Kiri Miller  
John Molnar  
Robert & Amalie Montstream  
Gordon & Laura Moss  
Nikki Munroe  
Colin Murphy  
Elinor Nacheman  
Ocean State Charities Trust  
Mark Oribello  
Pannone Lopes Devereaux & O'Gara  
Thomas Peirce  
Cindy Pierce  
Daniel Prentiss  
Michelle Raccone  
Claire Robinson  
Jim Roche  
David Rockefeller, Jr.  
Ellen Rogers  
Brendan Rose  
Joshua Rozovsky  
Justin Scandariato  
Roberta Shapiro  
Josh Short  
Janette C. Smart Charitable Trust  
Scott Sorensen  
Fiona Sparks  
Jenny Sparks  
Maureen Taylor & Dexter Strong  
Textron Charitable Trust  
Sally Turner  
Terry Van Heusen  
Daniel Schleifer & Johanna Walczak  
Laura White Carpenter  
The White Family Foundation  
Windgate Foundation  
Connie Worthington  
Michael Yefko  
Emily & Owen Zaengle  
Dana Zitnick

## **SUPPORTING US FOR MORE THAN 10 YEARS! CHANGE MAKERS**

Boris Bally  
Margaret Butler  
Jennifer Carnevale  
Oliver S. and Jennie R. Donaldson Charitable Trust  
Brian Dowling  
Jane Driver  
Steve Durkee  
Frank Faltus  
James Faulkner  
Heather G. & Ronald Florence  
Peter Gennaro  
Brian Goldberg  
Robert Gray  
Linda & Chuck Hughes  
Gregory & Genevieve Hunt  
Kristine Merz & Patty Ianieri  
Stefano Lavinio & Sandra Kenny  
Priscilla M. Little  
Kate Lyons  
Katherine Martin  
Sydney Montstream-Quas  
Nathan Nadeau  
New England Foundation for the Arts  
Frank Previti  
Bryan Proulx  
Nat Harris & Jennifer Quigley Harris  
Peter Rabins  
Rhode Island Foundation  
Rhode Island State Council on the Arts  
Maeve Rockefeller  
Jesse & Emily Rye  
Clarkson Schoettle  
Jennifer Smith  
Eric & Catherine Taylor  
Islay Taylor  
Rosalynde Vas Dias

## **SUPPORTING US FOR 15 YEARS OR MORE! WE'VE BEEN AROUND THE BLOCK TOGETHER**

Kate Lacouture & Tony Adams  
Simone P. Joyaux & Thomas Ahern  
Anonymous  
Dan Baudouin  
Nick Bauta  
Peter McClure & Phoebe Blake  
Kipp Bradford  
Stephen Brownell  
Lisa Carnevale  
Michelle Clark  
Judy Croyle  
Heidi Dorris  
Jori Ketten & Chris Erway  
Holly Ewald  
Nidal Fakhouri  
John Fazzino  
Elizabeth Fenik  
Stephanie Fortunato  
Richard Goulis  
Myrth York & David Green  
David Hardy  
Andrea Joseph  
Barbara Hunger & David Karoff  
Jef Sneider & Gwen Kay

Richard Rubinstein & Katherine Kolbert  
Rebecca & Michael Lambert  
Micah Salkind & Ted McGuire  
October Hill Foundation  
Lucia O'Reilly  
Gregory Picard  
Dan Neff & Annaliese Rittershaus-  
Brauman  
Bob & Karen Rizzo  
Ed & Maria Rondeau  
Clay Rockefeller & Manya Rubinstein  
Anna Shapiro  
David Sharp  
Marcia & Larry Sharp  
Kiki Sciullo & Howie Sneider  
Jill Sneider  
Abbot Stranahan  
Robert & Beatrice Swift  
Celeste Thomason  
Heather Guidero & Ryan Venghaus  
Christine & John West  
Gillian Kiley & Sam White  
Rudolf & Mary Winkes  
Korinna Winkes



# **INKIND SUPPORTER RECOGNITION**

We couldn't do our work without the generous in-kind support from partners and businesses who recognize The Steel Yard's contributions to the local community and economy. Every year these supporters supply thousands of dollars worth of talent, tools, materials and equipment!

Bullard Abrasives  
Narragansett Beer  
Robert Houllahan  
Jerry Labonte  
Holliston Sand  
Rob Schmidt  
Ocean State Job Lot



Photo of Ellen Rogers Sculpture "For Thee" [ellenrogers.com](http://ellenrogers.com)

# IN MEMORIAM

Gone. Not forgotten.

We take this space to dedicate  
our work ahead  
in memory of those we have lost.

To all those who have left us,  
we'll remember.

To those who have suffered loss,  
we grieve with you.



The Steel Yard is supported by the New England Foundation for the Arts through the New England Arts Resilience Fund, part of the United States Regional Arts Resilience Fund, an initiative of the U.S. Regional Arts Organizations and The Andrew W. Mellon Foundation, with major funding from the federal CARES Act from the National Endowment for the Arts



The Steel Yard's work is made possible through a combination of program-related earned income, private and government grants, corporate giving and individual philanthropy. 2019 operations are provided in part by a grant from the Rhode Island State Council on the Arts, through appropriation by the Rhode Island Assembly, a grant from the National Endowment for the Arts and private funders.



The Providence Department of Art, Culture + Tourism (ACT) ensures the continued development of a vibrant and creative city by integrating arts and culture into community life while showcasing Providence as an international cultural destination.





**MAKE A DONATION**

27 SIMS AVENUE PROVIDENCE, RI 02909  
P 401-273-7101 THESTEELYARD.ORG